

NOTICE OF RACE
Ynglingevenement
organised by **RR&ZV Maas en Roer**
from October 12th to 13th (inclusive) 2024
location: Hatendoer 48 Roermond

The notation '[DP]' in a rule means that a boat may not protest another boat for breaking that rule. This changes RRS 60.1(a).

1 RULES

- 1.1 The event is governed by the rules as defined in *The Racing Rules of Sailing (RRS)*. The Prescriptions of the RNWA can be found at <https://www.sailing.org/inside-world-sailing/rules-regulations/racing-rules-of-sailing/>
- 1.2 The rules below do not change any of the RRS. The sailing instructions may change the RRS.
- 1.3 If there is a conflict between languages the text in the Dutch language will take precedence.
- 1.4 Data protection: the GDPR declaration can be found at <https://maasenroer.nl/regatta>

2 SAILING INSTRUCTIONS

- 2.1 The sailing instructions will be available on the site of Maas en Roer at <https://maasenroer.nl/regatta>

3 COMMUNICATION

- 3.1 The official notice board is located at the entrance of the race office; the leftmost door at the club terrace.
- 3.2 [DP] While racing, except in an emergency, a boat shall not make voice or data transmissions and shall not receive voice or data communication that is not available to all boats.

4 ELIGIBILITY AND ENTRY

- 4.1 The event is open to all boats of the Yngling class.
- 4.2 Boats may enter the event by registering online before October 10th 2024 at <https://maasenroer.nl/regatta>
- 4.3 To be considered an entry in the event, a boat shall complete all registration requirements and pay all fees. The fees shall be paid via the online registration.

5 FEES

- 5.1 Entry fee will be €100. This includes:
- Use of the crane during the event: once before their first race and once after their last race.
 - A camping spot on land or in the water for competitors at the venue.
 - A berth at the venue for the sailboat used in the event.
 - A drink on the club terrace after the last race of the first race day.
 - Diner together with other skippers and crew at Eetcafé De Thuishaven on the first race day.

- 5.2 Other fees:

Lunch on race days, supplied by Eetcafé De Thuishaven	€10 per person per day
Diner for supporters on the first race day (skipper and crew diner is included in entry fee)	€24,50 per person

6 CREW LIMITATIONS

not applicable

7 ADVERTISING

not applicable

8 QUALIFYING SERIES AND FINAL SERIES

not applicable

9 SCHEDULE

9.1 Registration: *October 12th 2024 from 9:30 till 10:30 at the race office.*

9.2 Skippers meeting: *October 12th 2024 at 10:30 on the terrace outside the race office.*

9.3 Dates of racing:

<i>Date</i>	<i>First warning signal time</i>
<i>October 12th 2024</i>	<i>12:30</i>
<i>October 13th 2024</i>	<i>10:30</i>

9.4 Number of races:

<i>Date</i>	<i>Races per day Maximum</i>
<i>October 12th 2024</i>	<i>4</i>
<i>October 13th 2024</i>	<i>4</i>

9.5 On the last day of the regatta, no warning signal will be made after 15:00.

10 EQUIPMENT INSPECTION

Not applicable

11 CLOTHING AND EQUIPMENT

not applicable

12 VENUE

12.1 The race office is located at the following address: Hatenboer 48, 6041 TN Roermond.
Tel. race officer: +31629235089.

12.2 NoR Addendum A shows the plan of the event venue.

12.3 NoR Addendum B shows the location of the racing area.

13 COURSES

13.1 The diagrams in NoR Addendum C show the courses, including the approximate angles between legs, the order in which marks are to be passed, and the side on which each mark is to be left. The approximate course length will be 45 minutes.

14 PENALTY SYSTEM

not applicable

15 SCORING

- 15.1**
- (a) When fewer than 5 races have been completed, a boat's series score will be the total of her race scores.
 - (b) When 5, 6, 7 or 8 races have been completed, a boat's series score will be the total of her race scores excluding her worst score.

15.2 RRS 90.3(e) applies, only for the final results.

16 SUPPORT PERSON VESSELS
not applicable

17 CHARTERED OR LOANED BOATS
not applicable

18 [DP] BERTHING

18.1 Boats shall be kept at their place in the harbour assigned by the harbour master.

19 [DP] HAUL-OUT RESTRICTIONS

19.1 Boats shall not be hauled out during the regatta except with and according to the terms of prior written permission of the race committee.

20 [DP] DIVING EQUIPMENT AND PLASTIC POOLS

20.1 Underwater breathing apparatus and plastic pools or their equivalent shall not be used around boats between the preparatory signal of the first race and the end of the event.

20.2 Boats shall not be cleaned below the waterline by any means during the event.

21 RISK STATEMENT

21.1 RRS 3 states: 'The responsibility for a boat's decision to participate in a race or to continue to race is hers alone.' By participating in this event each competitor agrees and acknowledges that sailing is a potentially dangerous activity with inherent risks. These risks include strong winds and rough waters, sudden changes in weather, failure of equipment, boat handling errors, poor seamanship by other boats, loss of balance on an unstable platform and fatigue resulting in increased risk of injury. Inherent in the sport of sailing is the risk of permanent, catastrophic injury or death by drowning, trauma, hypothermia or other causes.

21.2 The organizing authority will not accept any liability for material damage or personal injury or death sustained in conjunction with or prior to, during, or after the regatta.

22 INSURANCE

22.1 Each participating boat shall be insured with valid third-party liability insurance with a minimum cover of Euro 1.500.000 or the equivalent per incident.

23 PRIZES

23.1 There will be 1 prize for each team in the top 3.

24 FURTHER INFORMATION

24.1 For further information please contact:

Race officer	Nic Gommans	+31 6 2923 5089
Communication	Renate Mittertreiner	+31 6 4349 6899
Communication	Stijn Berden	+31 6 5063 2086

Addendum A: the event venue

Addendum B: the racing area

Addendum C: the course

Addendum A: the event venue



Post Address:

R.R.&Z.V. Maas en Roer
Hatenboer 48
6041 TN Roermond

Route:

- Once on the road called Hatengebier, cross the bridge and pass Hermus Watersport.
- Follow the road around the corner to find the Maas en Roer gate on the left.
- Please park your car at the guest parking within the venue fence and not within the harbour fence to avoid obstruction harbour operations.
- Please register at the race office upon first arrival. The race office and notice board can be accessed via the leftmost door up on the terrace.
- De Thuishaven can be accessed via the rightmost door up on the terrace.
- The harbour master office is below the race office and can be accessed via the leftmost door next to the terrace.

Website:

<https://www.maasenoer.nl/>

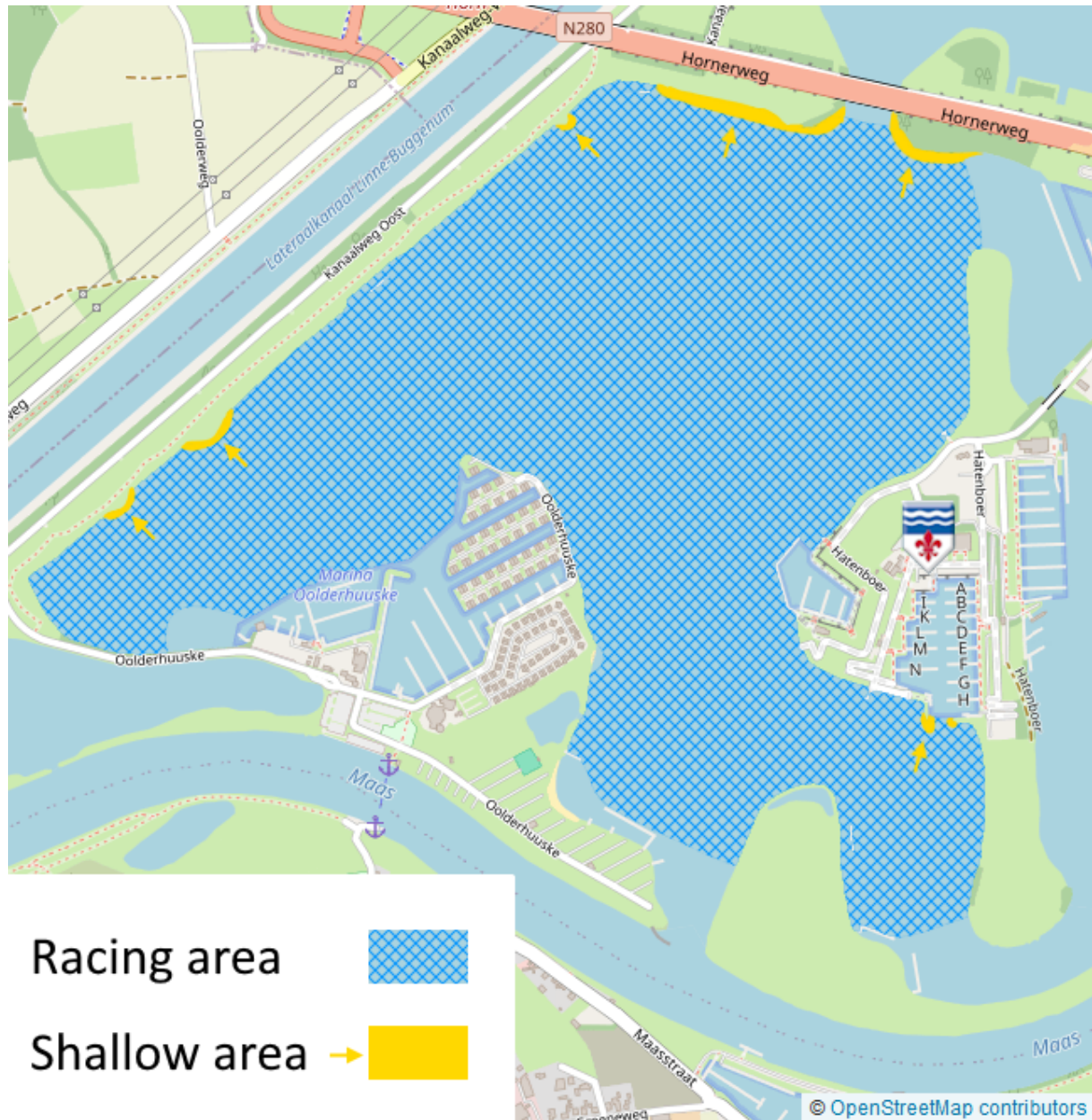
Harbour master:

Hans Wielders
+31 6 145 747 87 (preferred)
+31 475 33 55 44

havenmeester@maasenoer.nl

Addendum B: the racing area

The racing area is on the Plas Hatenoer, also known as the Zuidplas, near Roermond. Some areas near the water edges are notably shallow. Most prominent shallow area is at the harbour entrance. When exiting the harbour, steer straight out for approximately 15 meters before turning right.



Addendum C: the course

The course will be an up-down course with a gate near the starting line and a finish line near the top marks.

Marks:

- The starting mark on the port end will be a red buoy with an orange flag.
- The starting mark on the starboard end will be the race committee signal vessel with an orange flag.
- Course marks 1, 2, 3 and 4 will be orange/white cylindrical buoys.
- The finishing mark on the port end will be a red buoy with a blue flag.
- The finishing mark on the starboard end will be a race committee vessel with a blue flag.

Marks 1 and 2 are to be left to port while rounding. The finish line may be positioned on any side of these marks. Marks 3 and 4 will form a gate. The gate may be positioned on any side of the starting line. If one of these gate marks is missing when the first competitor reaches the remaining mark, then the remaining mark is to be left to port at the discretion of the first competitor.

The race committee signal vessel may show the numbers of the buoys in order as a confirmation. The pennant shown on the race committee signal vessel shows how many rounds are to be sailed.

Pennant 1 (can be omitted):



Start – 1 – 2 – GATE – Finish.

Pennant 2:



Start – 1 – 2 – GATE – 1 – 2 – GATE – Finish.

Pennant 3:



Start – 1 – 2 – GATE – 1 – 2 – GATE – 1 – 2 – GATE – Finish.

Pennant 4:



Start – 1 – 2 – GATE – 1 – 2 – GATE – 1 – 2 – GATE – 1 – 2 – GATE – Finish.

