



## NOTICE OF RACE Open Dutch Championship

H-boat class

**organised by RR&ZV Maas en Roer**

under the auspices of the Royal Netherlands Watersport Association (RNWA)

from September 26<sup>th</sup> to 28<sup>th</sup> (inclusive) 2025

location: Hatenboer 48 Roermond

---

The notation '[NP]' in a rule means that a boat may not protest another boat for breaking that rule. This changes RRS 60.1(a).

### 1 RULES

- 1.1 The event is governed by the rules as defined in *The Racing Rules of Sailing (RRS)*. The Prescriptions of the RNWA can be found at <https://www.sailing.org/inside-world-sailing/rules-regulations/racing-rules-of-sailing/>
- 1.2 The 'Rules for (Open) Championships Sailing, Windsurfing and Kiteboarding' (available at [www.watersportverbond.nl/media/rmxdy253/reglement-voor-kampioenschappen-20230221-v7.pdf](http://www.watersportverbond.nl/media/rmxdy253/reglement-voor-kampioenschappen-20230221-v7.pdf)) will apply.
- 1.3 The following racing rules will be changed:
  - 15.1 changes RRS A2.1.
  - The sailing instructions may change other rules as well.
- 1.4 If there is a conflict between languages, the text in the English language will take precedence.
- 1.5 Every person on board who has his domicile in the Netherlands shall have the appropriate license.
- 1.6 Data protection: the GDPR declaration can be found at <https://maasenroer.nl/statuten>
- 1.7 RRS Appendix T, Arbitration, applies.

### 2 SAILING INSTRUCTIONS

- 2.1 The sailing instructions will be available after September 10<sup>th</sup> 2025 on the site of Manage2Sail at <https://manage2sail.com/>

### 3 COMMUNICATION

- 3.1 The official notice board is located at the entrance of the race office; the leftmost door up on the club terrace.
- 3.2 [DP] While racing, except in an emergency, a boat shall not make voice or data transmissions and shall not receive voice or data communication that is not available to all boats.

### 4 ELIGIBILITY AND ENTRY

- 4.1 The event is open to all boats of the H-boat class.
- 4.2 Boats may enter the event by registering online before September 23<sup>rd</sup> 2025 at <https://manage2sail.com/>
- 4.3 To be considered an entry in the event, a boat shall complete all registration requirements and pay all fees. The entry fee shall be paid via the online registration.

### 5 FEES

- 5.1 Entry fee will be €175. This includes:
  - Use of the crane during the event: once before their first race and once after their last race.
  - A camping spot on land or in the water at the venue for competitors.
  - A berth at the venue for the sailboat used in the event.
  - A drink for skipper and crew on the pier at the venue after the last race on Friday, September 26<sup>th</sup> 2025.
  - Diner for skipper and crew at Eetcafé De Thuishaven after the last race on Saturday, September 27<sup>th</sup> 2025.
  - Soup for skipper and crew at Eetcafé De Thuishaven after the last race on Sunday, September 28<sup>th</sup> 2025.
- 5.2 Other fees:
  - Breakfast and lunch may be supplied by Eetcafé De Thuishaven on race days for an additional fee.



## 6 CREW LIMITATIONS

not applicable

## 7 ADVERTISING

not applicable

## 8 QUALIFYING SERIES AND FINAL SERIES

not applicable

## 9 SCHEDULE

9.1 Registration: *September 26<sup>th</sup> 2025 from 10:30 till 11:30 at the race office.*

9.2 Equipment inspection and event measurement:

Competitors shall be available with their boat on *September 26<sup>th</sup> 2025 from 11:00 till 11:30 at the crane, or guest boat parking.*

9.3 Skippers meeting: *September 26<sup>th</sup> 2025 at 11:30 on the terrace outside the race office.*

9.4 Dates of racing:

<i>Date</i>	<i>First warning signal time</i>
<i>September 26<sup>th</sup> 2025</i>	<i>13:00</i>
<i>September 27<sup>th</sup> 2025</i>	<i>11:00</i>
<i>September 28<sup>th</sup> 2025</i>	<i>11:00</i>

9.5 Number of races:

<i>Date</i>	<i>Races per day Scheduled</i>	<i>Races per day Maximum</i>
<i>September 26<sup>th</sup> 2025</i>	<i>2</i>	<i>4</i>
<i>September 27<sup>th</sup> 2025</i>	<i>3</i>	<i>5</i>
<i>September 28<sup>th</sup> 2025</i>	<i>2</i>	<i>3</i>

9.6 A maximum of 7 races will be sailed.

9.7 On the last day of the regatta no warning signal will be made after 15:00.

## 10 EQUIPMENT INSPECTION

10.1 Each boat shall produce or verify a valid measurement certificate.

10.2 Boats may be inspected at any time.

10.3 Any equipment may be inspected or measured, to be determined by the technical committee.

10.4 [DP] Boats shall also comply with RRS 78.1 when presented for inspection.

## 11 CLOTHING AND EQUIPMENT

not applicable

## 12 VENUE

12.1 The race office is located at the following address: *Hatenboer 48, 6041 TN Roermond.*

Race officer phone number: +31 6 2923 5089

12.2 NoR Addendum A shows the plan of the event venue.

12.3 NoR Addendum B shows the location of the racing area.

## 13 COURSES

13.1 The diagrams in NoR Addendum C show the courses, including the approximate angles between legs, the order in which marks are to be passed, and the side on which each mark is to be left. The approximate course length will be 45 minutes.

## 14 PENALTY SYSTEM

not applicable



## **15 SCORING**

**15.1** Four races are required to be completed to constitute a championship. This changes RRS A2.1.

**15.2** (a) When 4 races have been completed, a boat's series score will be the total of her race scores.

(b) When 5, 6, or 7 races have been completed, a boat's series score will be the total of her race scores excluding her worst score.

**15.3** RRS 90.3(e) applies, only for the final results.

## **16 SUPPORT PERSON VESSELS**

not applicable

## **17 CHARTERED OR LOANED BOATS**

not applicable

## **18 [DP] BERTHING**

**18.1** Boats shall be kept at their place in the harbour assigned by the harbour master.

## **19 [DP] HAUL-OUT RESTRICTIONS**

**19.1** Boats shall not be hauled out during the regatta except with and according to the terms of prior written permission of the race committee.

## **20 [DP] DIVING EQUIPMENT AND PLASTIC POOLS**

**20.1** Underwater breathing apparatus and plastic pools or their equivalent shall not be used around boats between the preparatory signal of the first race and the end of the event.

**20.2** Boats shall not be cleaned below the waterline by any means during the event.

## **21 RISK STATEMENT**

**21.1** RRS 3 states: 'The responsibility for a boat's decision to participate in a race or to continue to race is hers alone.' By participating in this event each competitor agrees and acknowledges that sailing is a potentially dangerous activity with inherent risks. These risks include strong winds and rough waters, sudden changes in weather, failure of equipment, boat handling errors, poor seamanship by other boats, loss of balance on an unstable platform and fatigue resulting in increased risk of injury. Inherent in the sport of sailing is the risk of permanent, catastrophic injury or death by drowning, trauma, hypothermia or other causes.

**21.2** The organizing authority will not accept any liability for material damage or personal injury or death sustained in conjunction with or prior to, during, or after the regatta.

## **22 INSURANCE**

**22.1** Each participating boat shall be insured with valid third-party liability insurance with a minimum cover of Euro 1.500.000 or the equivalent per incident.

## **23 PRIZES**

**23.1** The RNWA supplies for the winning boat or team a blue pennant and a medal for every member of the crew of the first three boats or crews (there will be no extra medals available for changes in the crew during the event).

## **24 FURTHER INFORMATION**

**24.1** For further information please contact:

Race officer: Nic Gommans, +316 2923 5089, [wedcom@maasenroer.nl](mailto:wedcom@maasenroer.nl)

**Addendum A: the event venue**

**Addendum B: the racing area**

**Addendum C: the course**



## **Addendum A: the event venue**



### Post Address:

R.R.&Z.V. Maas en Roer  
Hatenboer 48  
6041 TN Roermond

### Route:

- Once on the road called Hatendoer, cross the bridge and pass Hermus Watersport.
- Follow the road around the corner to find the Maas en Roer gate on the left.
- Please park your car at the guest parking within the venue fence and not within the harbour fence to avoid obstruction harbour operations.
- Please register at the race office upon first arrival. The race office and notice board can be accessed via the leftmost door up on the terrace.
- De Thuishaven can be accessed via the rightmost door up on the terrace.
- The harbour master office is below the race office and can be accessed via the leftmost door next to the terrace.

### Website:

<https://www.maasenoer.nl/>

### Harbour master:

Hans Wielders  
+31 6 145 747 87 (preferred)  
+31 475 33 55 44

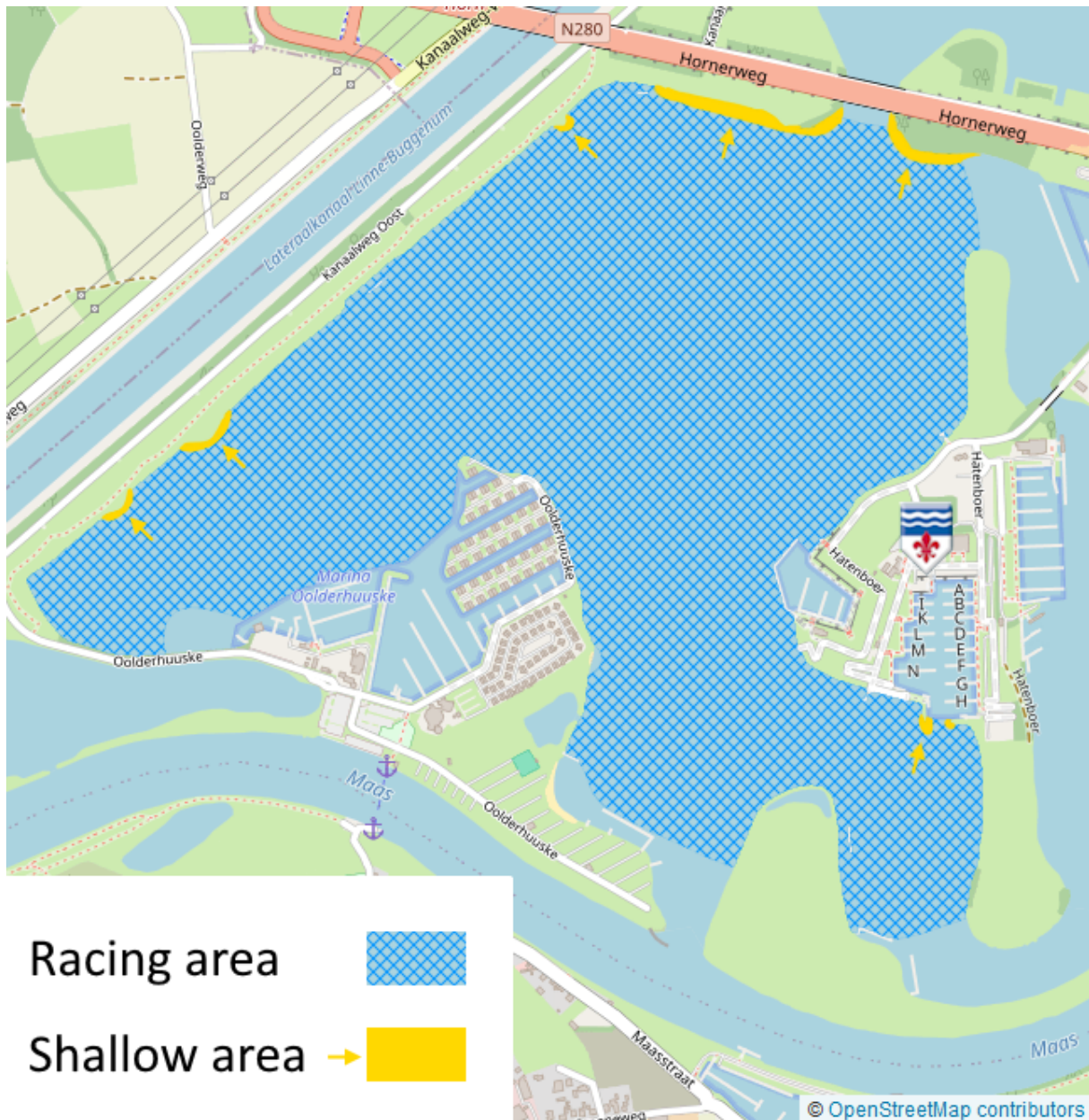
[havenmeester@maasenoer.nl](mailto:havenmeester@maasenoer.nl)





## Addendum B: the racing area

The racing area is on the Plas Hatendoer, also known as the Zuidplas, near Roermond. Some areas near the water edges are notably shallow. Most prominent shallow area is at the harbour entrance. When exiting the harbour, steer straight out for approximately 15 meters before turning right.





## Addendum C: the course

The course will be an up-down course with a gate near the starting line and a finish line near the top marks.

### Marks:

- The starting mark on the port end will be a red buoy with an orange flag.
- The starting mark on the starboard end will be the race committee signal vessel with an orange flag.
- Course marks 1, 2, 3 and 4 will be orange/white cylindrical buoys.
- The finishing mark on the port end will be a red buoy with a blue flag.
- The finishing mark on the starboard end will be a race committee vessel with a blue flag.

Marks 1 and 2 are to be left to port while rounding. The finish line may be positioned on any side of these marks. Marks 3 and 4 will form a gate. The gate may be positioned on any side of the starting line. If one of these gate marks is missing when the first competitor reaches the remaining mark, then the remaining mark is to be left to port at the discretion of the first competitor.

The race committee signal vessel may show the numbers of the buoys in order as a confirmation. The pennant shown on the race committee signal vessel shows how many rounds are to be sailed.

Pennant 1 (can be omitted):



Start – 1 – 2 – GATE – Finish.

Pennant 2:



Start – 1 – 2 – GATE – 1 – 2 – GATE – Finish.

Pennant 3:



Start – 1 – 2 – GATE – 1 – 2 – GATE – 1 – 2 – GATE – Finish.

Pennant 4:



Start – 1 – 2 – GATE – 1 – 2 – GATE – 1 – 2 – GATE – 1 – 2 – GATE – Finish.

